

HYGIENE, ASEPSIS, SERVICE
FOR SOFTDUCTS



SERVICE

WARRANTY, RESPONSIBILITY AND COMMITMENT

We are committed to always do what is necessary to obtain the result of a disinfected SoftDuct in a correct way, which impacts on the compliance of sanitary norms.

HACCP & GPM

We always reiterate our willingness to receive technical personnel and perform an audit of our plant processes under HACCP and GMP guidelines.

WE GUARANTEE FUNCTIONALITY

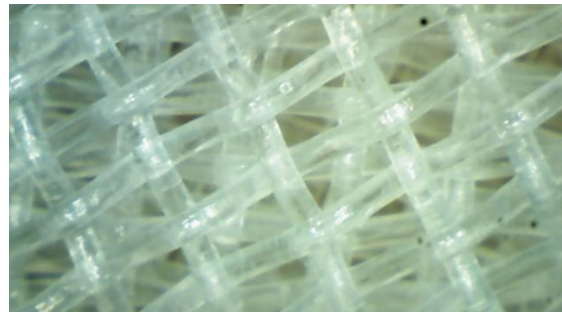
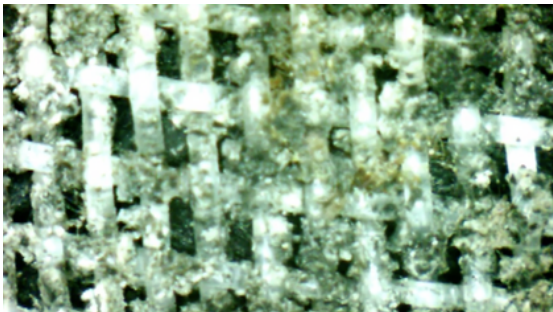
The responsibility is not only to obtain a "white" SoftDuct, it is to perform permeability tests, relevant repairs, work together with the quality and maintenance departments to set and meet safety objectives.

**EVERYONE CAN WASH A SOFTDUCT, BUT NOT
EVERYONE CAN DO IT WELL.**

HOW WE WORK?

We perform the service in our facility, maintaining our principle of specialization: we only wash SoftDucts. Thanks to our sanitary barrier process, automatic dosing of chemicals (specially chosen for the fabric) and special machines we can offer a guarantee of optimum cleanliness and performance, allowing the customer to comply with their GMP, HACCP.

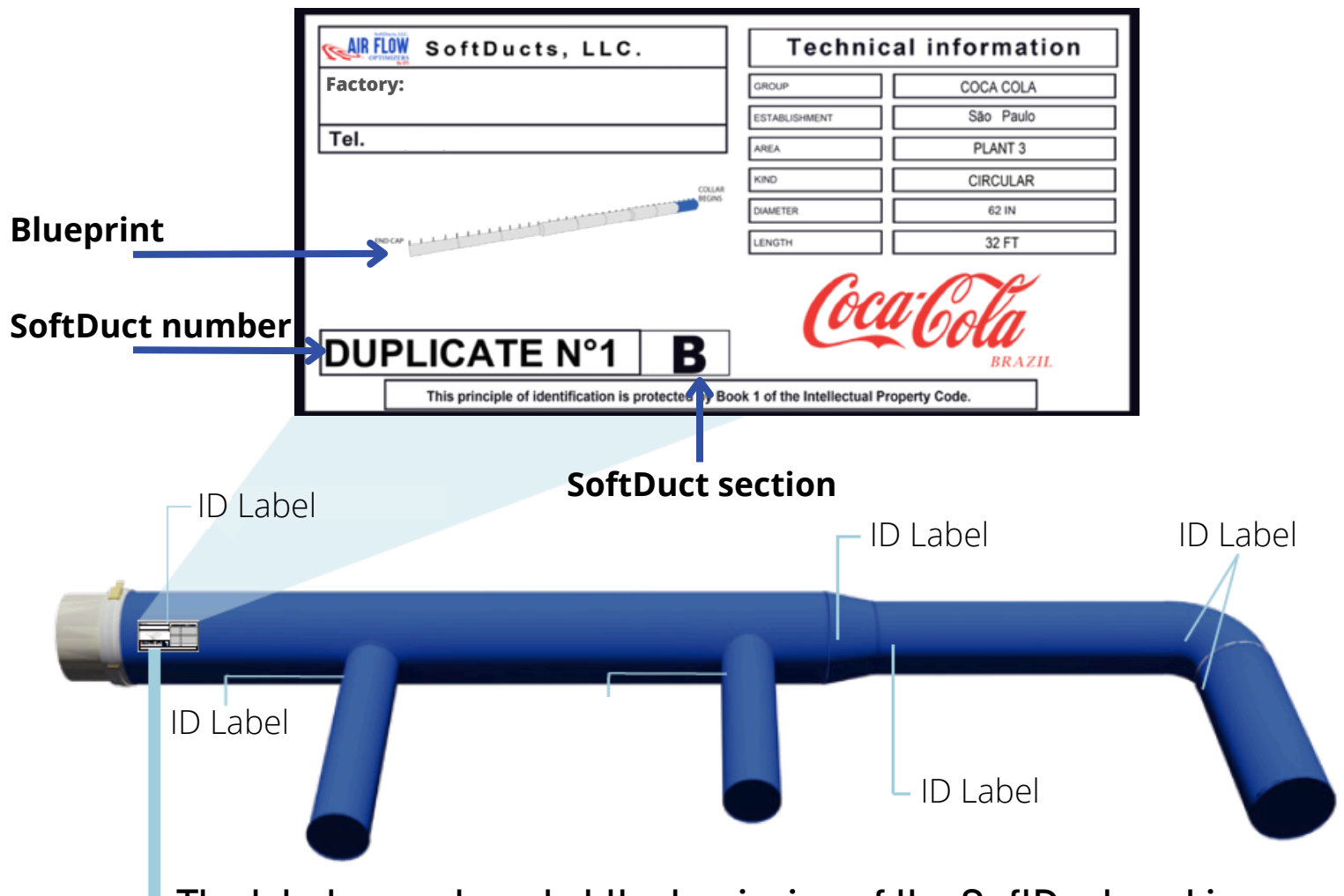
When we receive the ducts we make a visual inspection, take microscopic and digital photographs, as well as photographs at the end of the service which allows us to attach all the evidence to a complete maintenance report. In addition, we can share a microbiological analysis if required.



TRACEABILITY

If necessary, we propose identification labels on the Softduct, in order to find technical information more quickly and easily locate the section, avoiding confusion between areas or systems.

Each label is made according to the customer's needs.



The labels are placed at the beginning of the SoftDuct, making it easy to locate

MAINTENANCE REPORT

In our maintenance report we find the description of the parts that were received for service, general data and repairs made if necessary. This document is a support for companies that receive internal and external safety audits.



Companie:

File:

Date:

Prepared by:

User

Location

Responsible on site

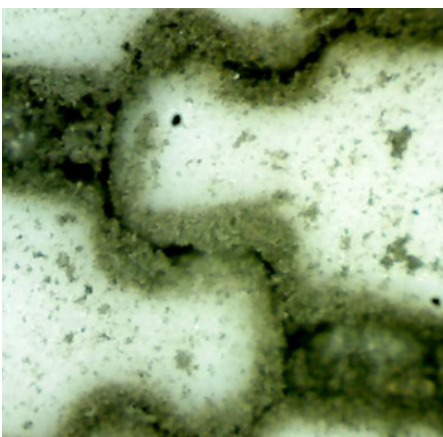
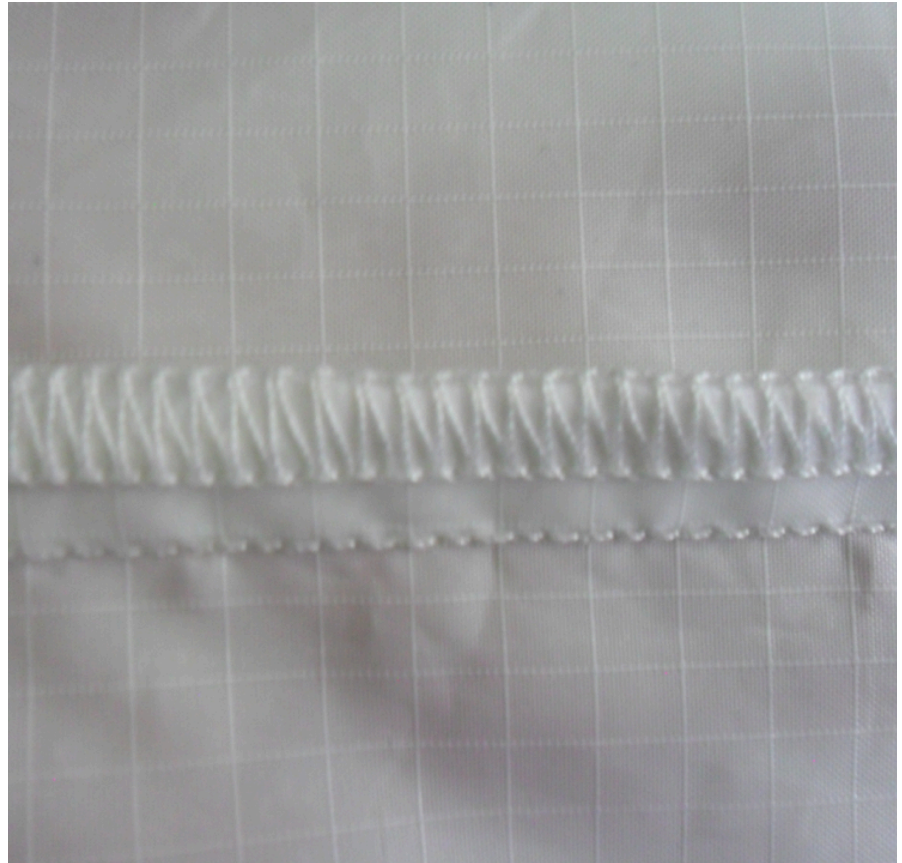
Review date

Description of the SoftDucts under maintenance and general comments

| | AHU 1 | AHU 2 |
|--|-----------------|-----------------|
| | SOD-8007-01A-15 | SOD-8007-02A-15 |
| | SOD-8007-01B-15 | SOD-8007-02B-15 |
| | SOD-8007-01C-15 | SOD-8007-02D-15 |
| | SOD-8007-01E-15 | SOD-8007-02F-15 |

MAINTENANCE REPORT

The report includes digital and microscopic photographs of before and after, in order to have a control and comparison of the condition of the SoftDuct.



Our commitment is a clean and functional SoftDuct, taking care of permeability and durability characteristics while maintaining asepsis.



THEY TRUST US

PIRELLI



BOSCH Chobani.



DANONE

mabe

L'ORÉAL

Kellogg's



HUTCHINSON

Canel's



DRÄXLMAIER

**Constellation
Brands**

1942
DonJulio



CooperStandard

Pedigree

Nestlé



**SRG
GLOBAL**
A GUARDIAN COMPANY

